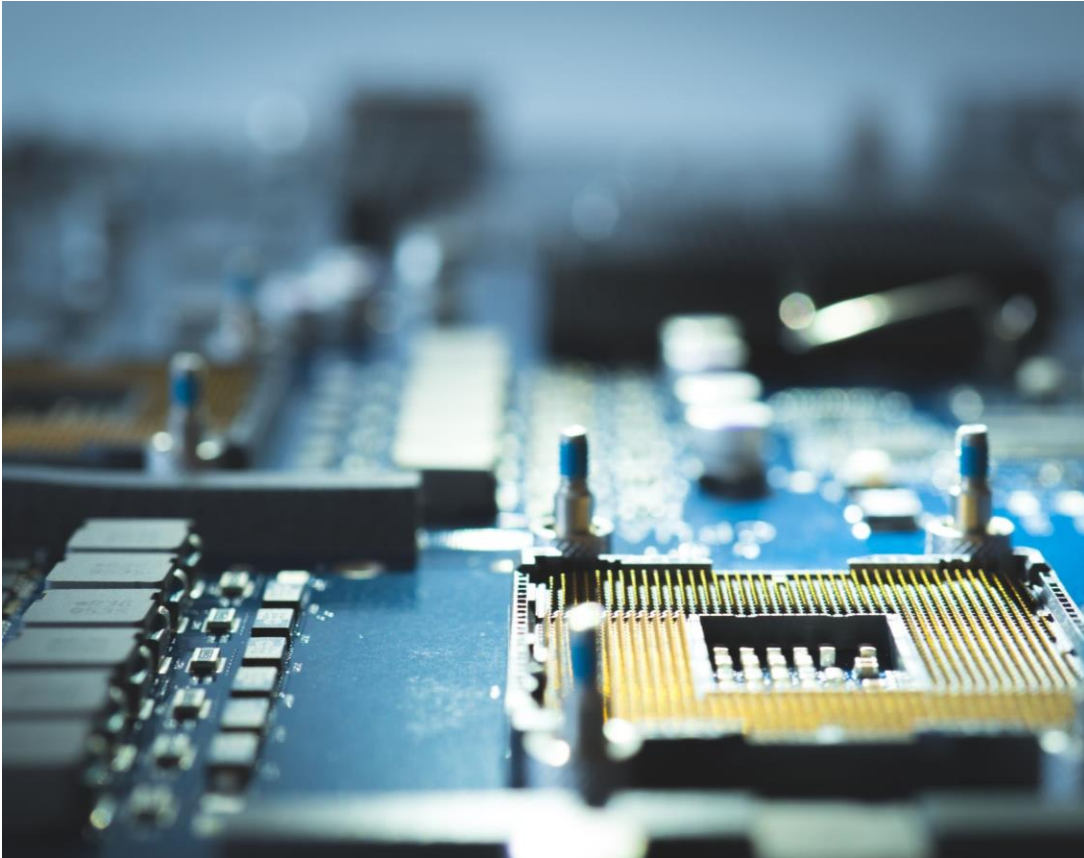


Versatility 2025



Hardware Platforms

Hardware Platforms Update



- Market Landscape
- WAN Edge (SD-WAN / NGFW)
 - CSG
 - Dell (Versa Certified)
- LAN Edge (SD-LAN)
 - CSX
- WLAN
 - CSW

VOS™ powered platforms = silicon to software



Versatility 2025

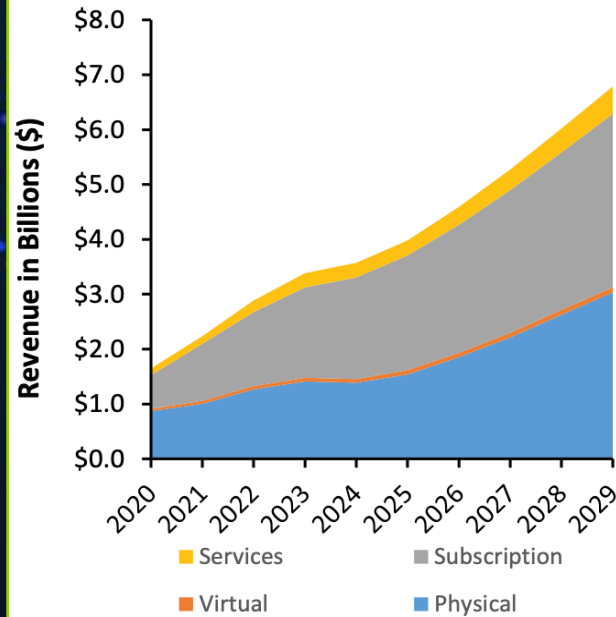
© 2025 Versa and/or its affiliates. All rights reserved.



SDN Market Landscape

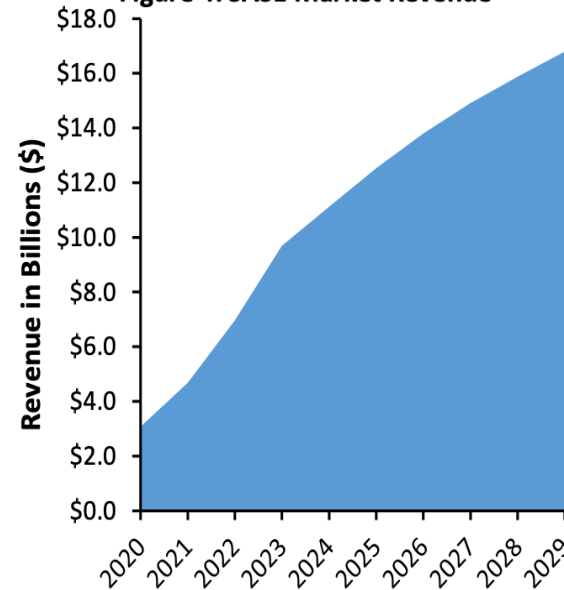
SDWAN

Figure 5: SD-WAN Market Revenue



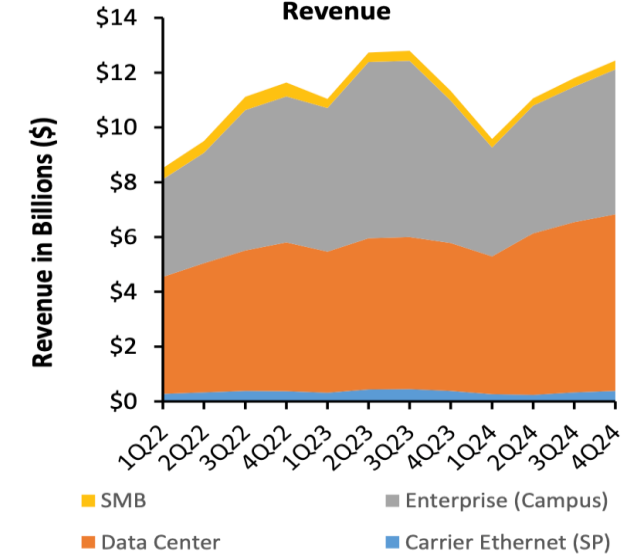
SASE

Figure 4: SASE Market Revenue



SDLAN

Figure 1: Ethernet Switch Market Revenue



• Source : 650 Group Q1'25

Deployment models


SDWAN


 Cloud

 On Prem

 VM


SASE

 SASE as a service:
simple and fast for SMBs
with small footprints


 Private SASE:
Enterprises, bigger footprint,
managed

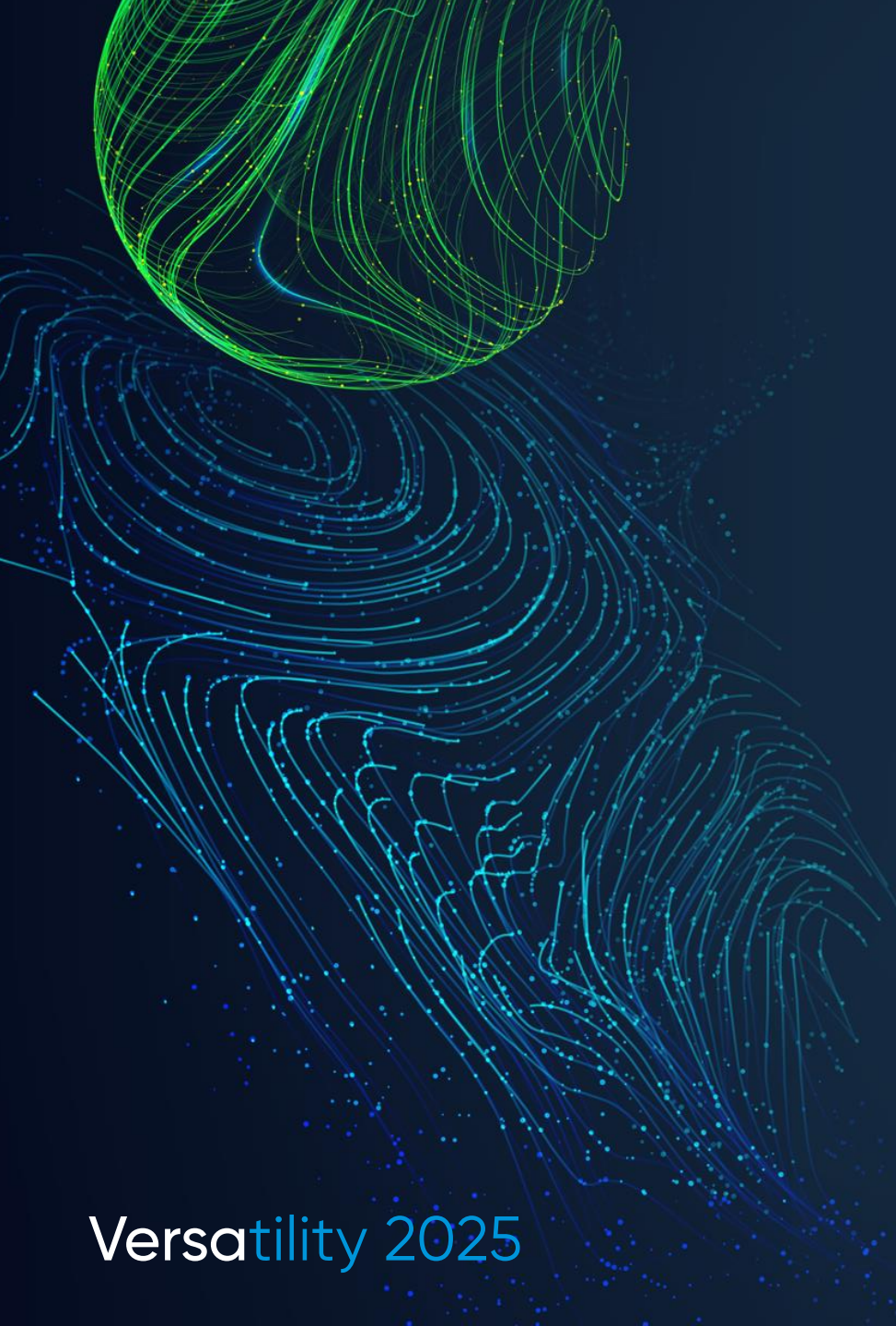
 Sovereign SASE:
Customer premises, DC, full
control, data and compliance

SD-LAN

 Cloud managed
switches

 On Prem Zero Trust
Network Access (ZTNA),
Micro segmentation

 Switching and WLAN
APs



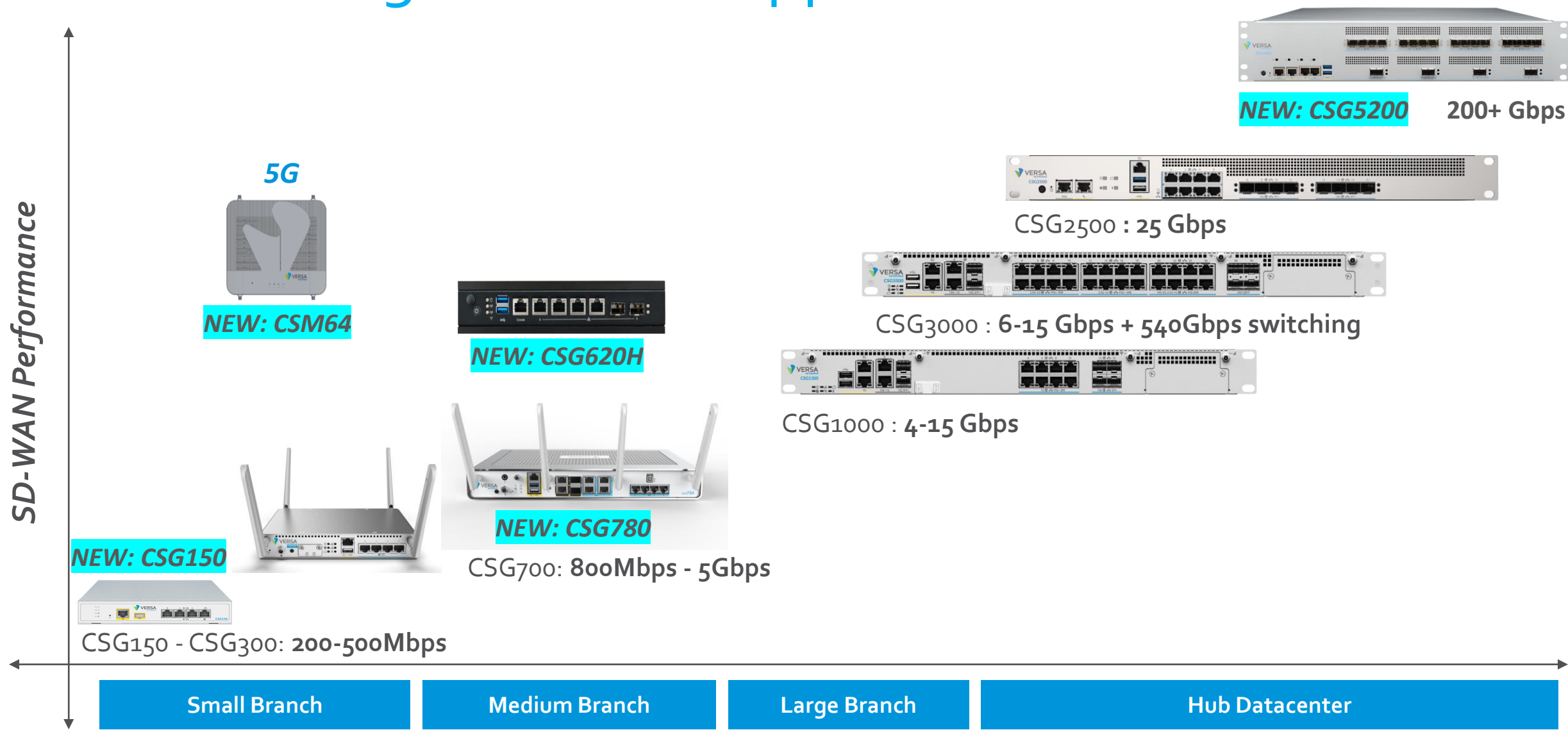
CSG Platforms

Versatility 2025

© 2025 Versa and/or its affiliates. All rights reserved.



CSG: WAN Edge & NGFW Appliances



Versatility 2025



CSG5200 : Highest Performance appliance



- DC Edge, High-end campus deployments
- SD-WAN, NGFW, on-prem SASE/SSE
- >200 Gbps SD-WAN performance
- Fully redundant field replaceable PSU, fans

CSG150 : Small form factor good performance



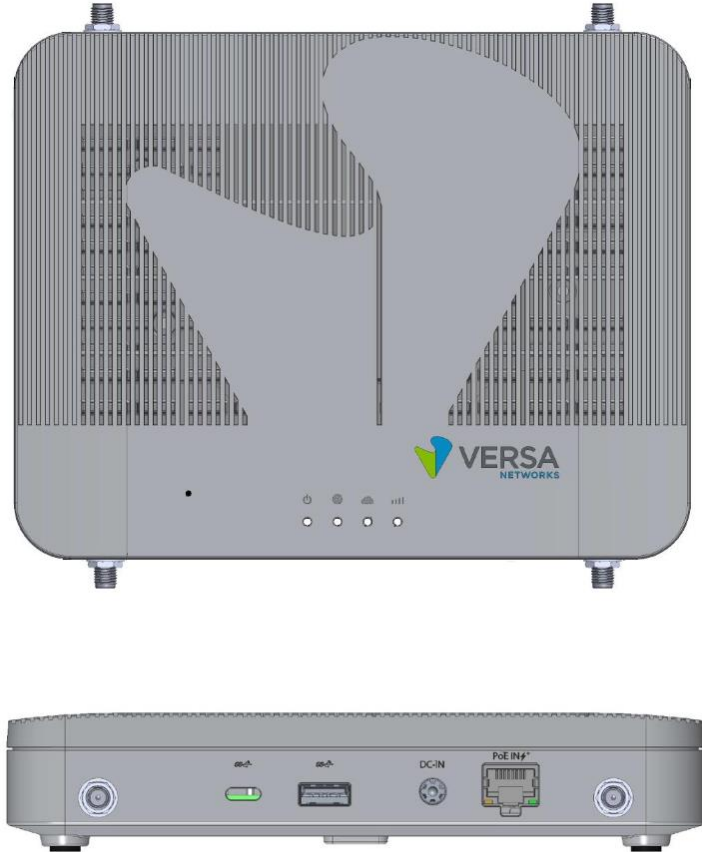
- Small branch
- SD-WAN, NGFW, on-prem ZTNA
- 500 Mbps SD-WAN performance
- Fan less for high resiliency

CSG620h : Hardened Appliance with high performance



- Deployments requiring hardened appliances
- SD-WAN, NGFW, on-prem ZTNA
- 1.3 Gbps SD-WAN performance
- Fan less for high resiliency
- AC and DC power options
- Built-in global LTE

CSM64 : External 5G

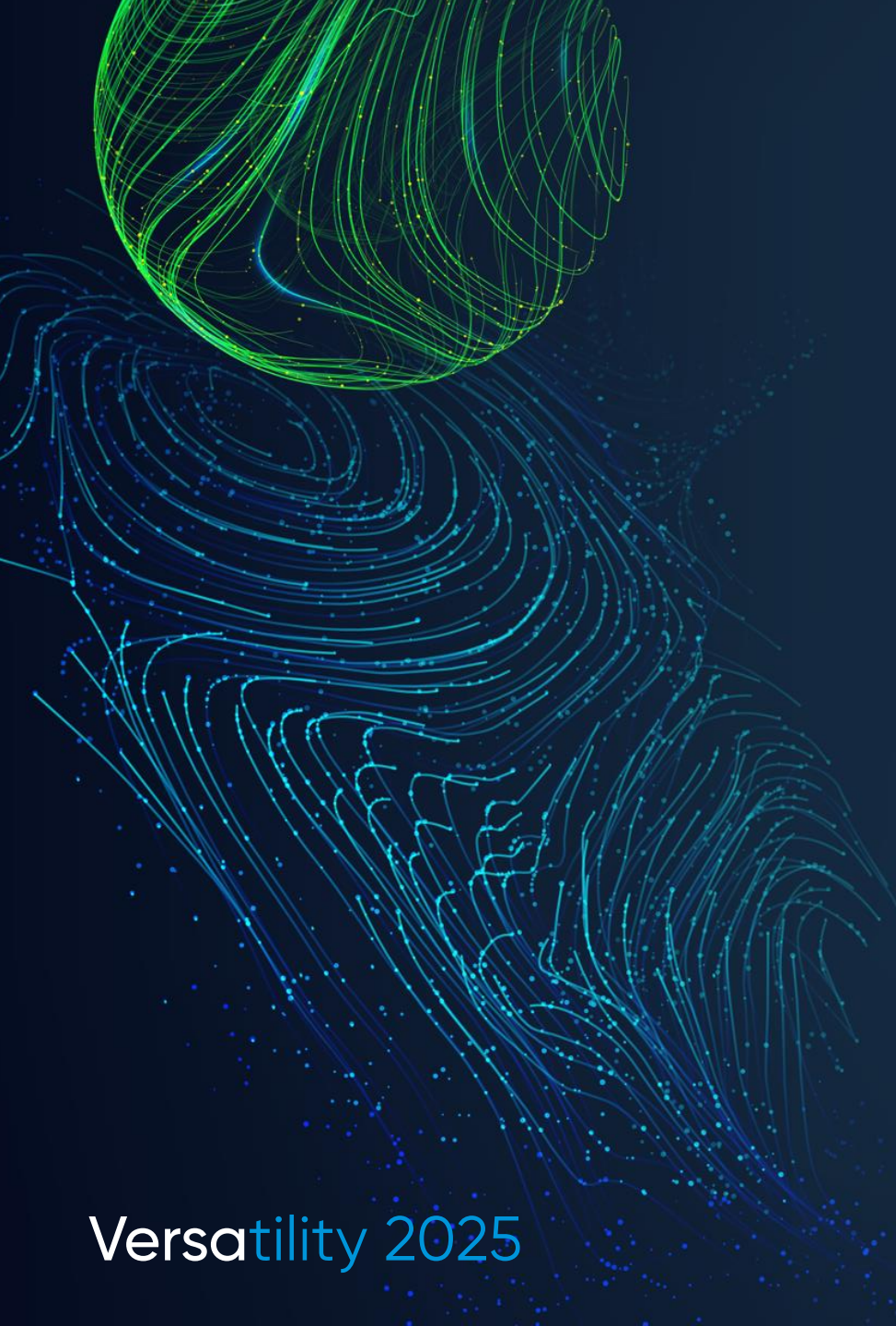


INDOOR



OUTDOOR

- External 5G/LTE Model
- Dual SIM
- Managed from VOS appliance Director and Analytics
- Indoor and outdoor versions
- PoE Ethernet for Power and Connectivity

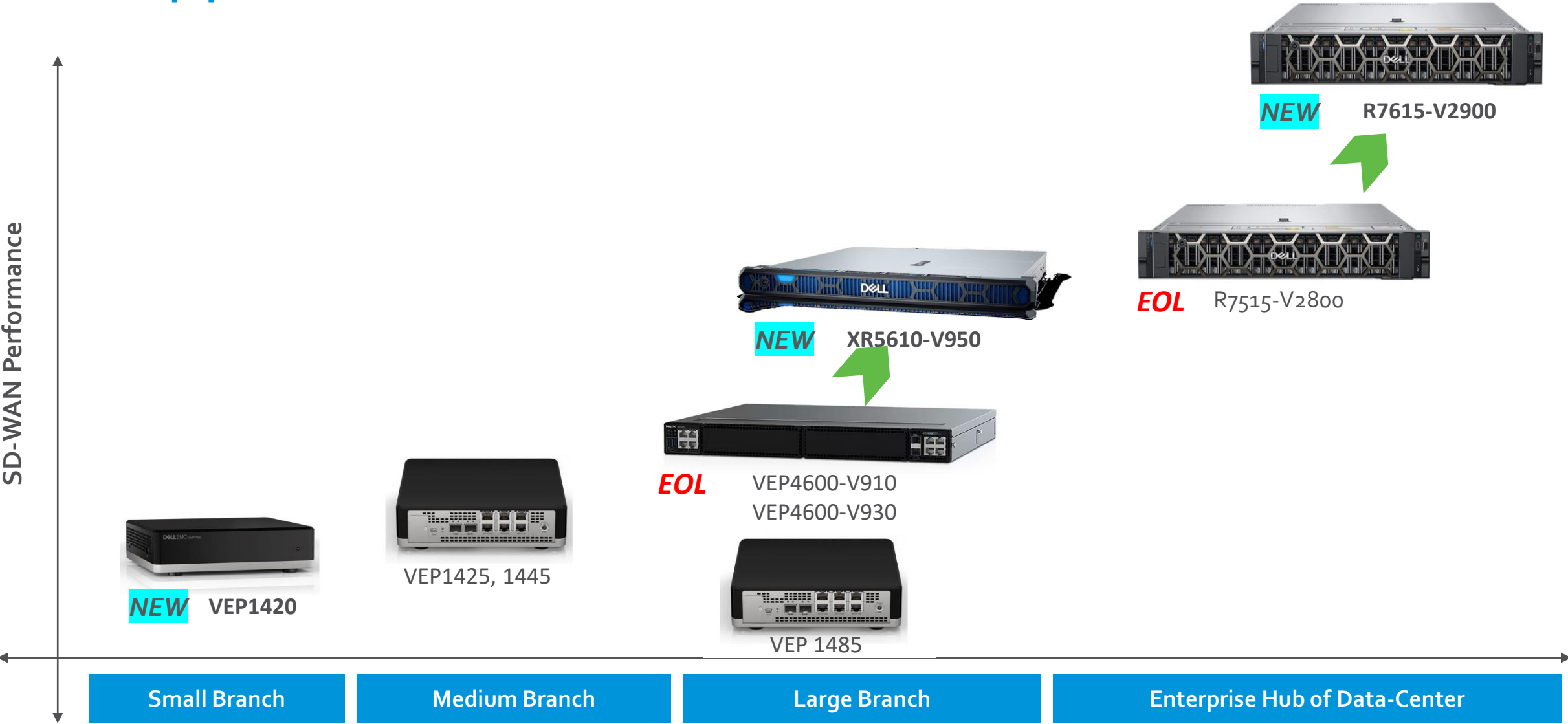


Versatility 2025

Dell Platforms

Versa certified

Dell Appliances



Versatility 2025



SD-LAN

Versatility 2025

© 2025 Versa and/or its affiliates. All rights reserved.



AI Networking and it's importance in Campus



- Real Time Data processing
- Centralized Network Management
 - Oversee HW/SW and monitor performance in real time enhancing operational effectiveness
- Proactive AI driven Insights
 - Integration of predictive analytics to identify potential issues before they arise, improving security and minimizing downtime

Benefits of full lifecycle automation in Campus networks



Versatility 2025

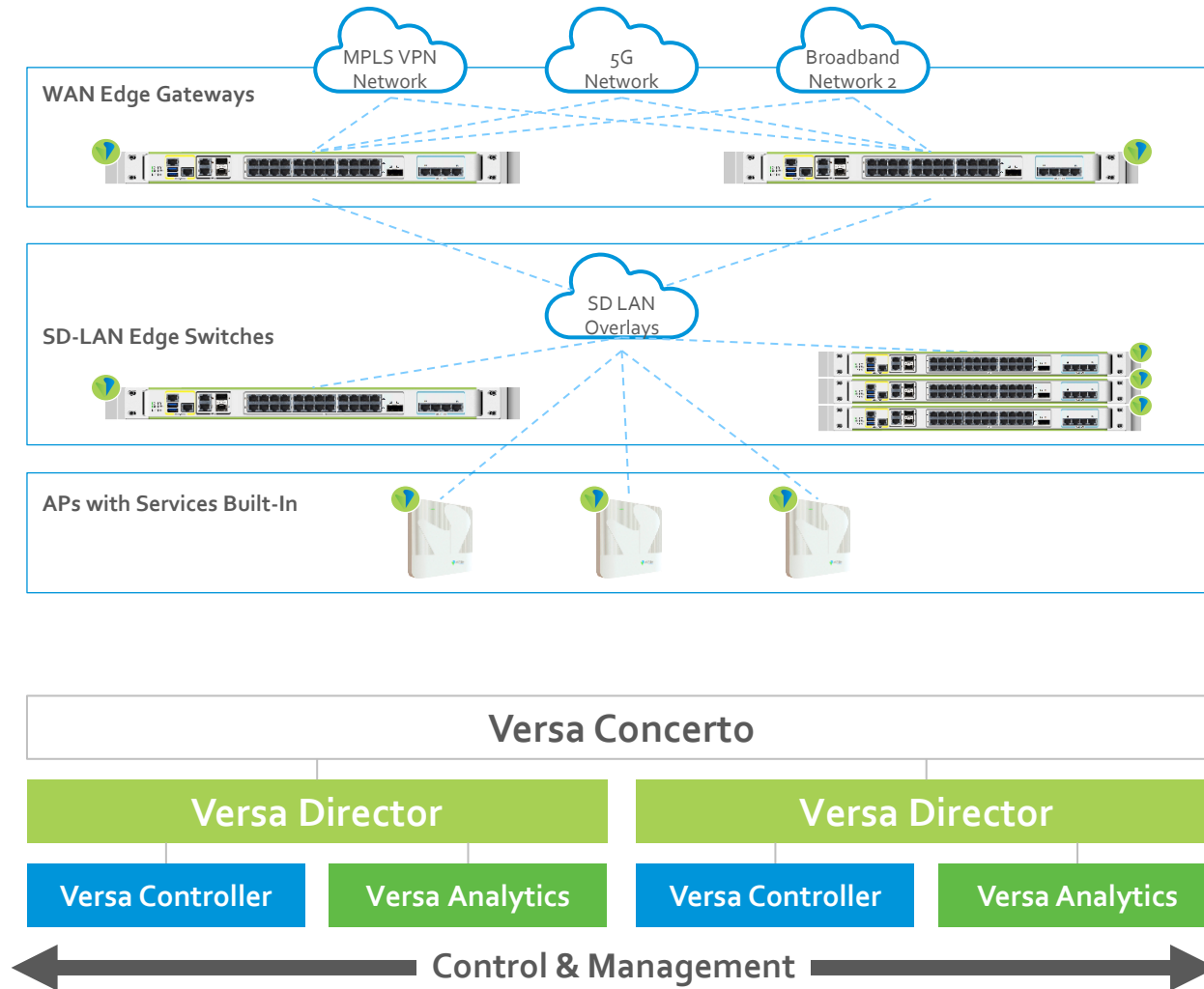
© 2025 Versa and/or its affiliates. All rights reserved.



Zero Trust Security in Campus Networks



Versa Software Defined Network Architecture



WAN Edge w/Services:

- Best in class SD-WAN, NGFW, UTM, Routing, uCPE with SD-LAN

LAN Edge:

- L2/L3, native full NGFW suite, with built-in Access Control, L4-7 Policy Control with line rate Switching
- SD-LAN Overlays for max flexibility and traffic separation in deployment

Wireless LAN Edge:

- L2/L3, native NGFW, Access Control, Policy Control built-in APs integrated with SD-LAN
- VOS™ across WAN Edge, LAN Edge and Wireless Edge
- Cloud Managed Analytics Stack – Single Pane of Glass
- Unified L4-7 Policy Control across all layers

Zero Trust Network for the LAN

Agility and Automation

- Single Plane of Glass
- Keep pace with fast-developing critical requirements for security, agility, and responsiveness
- SD-WAN,
- SD-LAN Switching,
- WLAN AP

ZTNA that follows all users

- Bridging the gap between legacy on-prem LAN solutions Vs Cloud delivered ZTNA
- On-prem ZTNA, micro segmentation

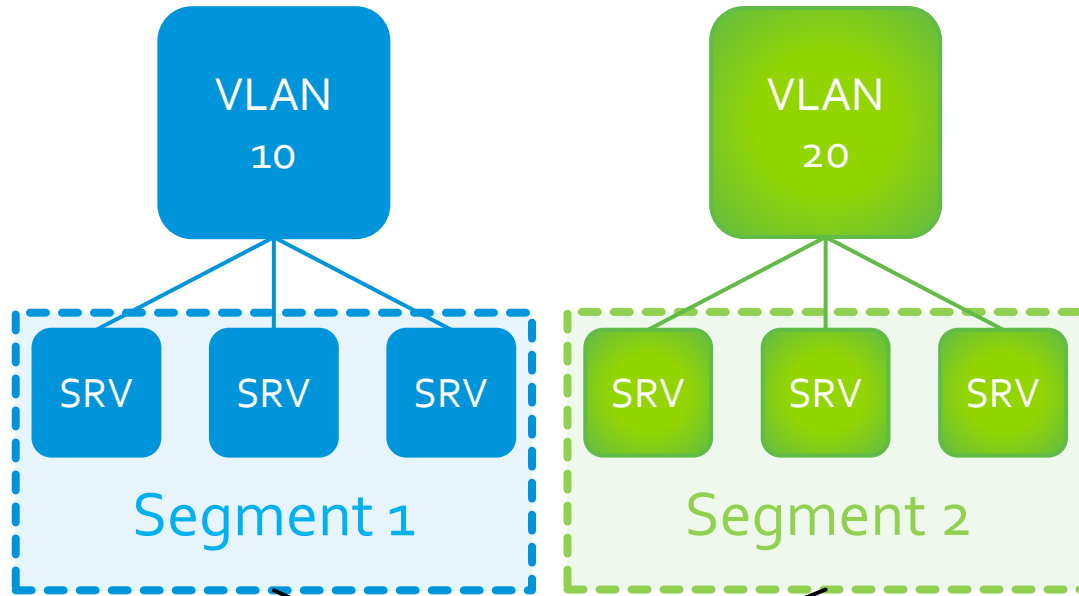
Security on Enterprise LAN Edge

- Malware/ransomware protection
- Secure LAN
- E-W traffic protection

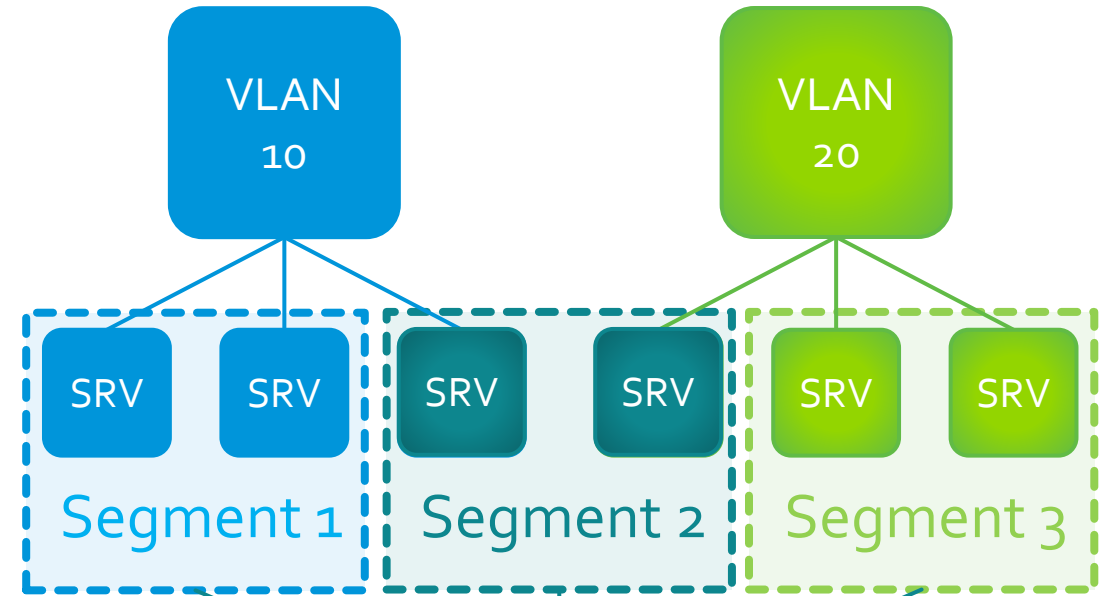
Visibility into IoT Devices, BYOD and traffic

- Full visibility into IoT devices
- Manage BYOD device access
- Segment network traffic for optimal performance
- 360 degrees visibility on LAN
→ UEBA

Traditional Segmentation vs Micro-Segmentation

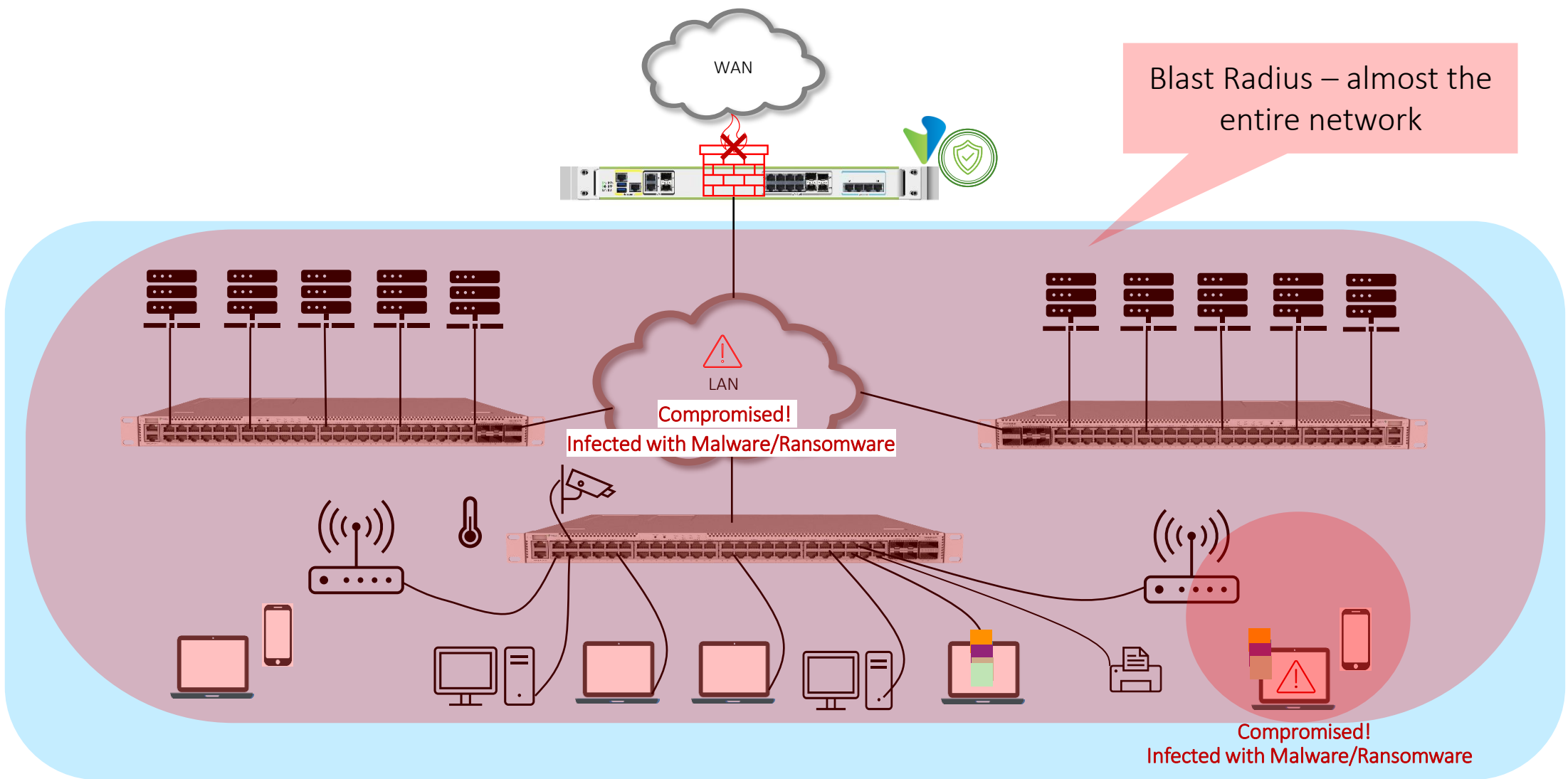


Traditional / Macro
Segmentation

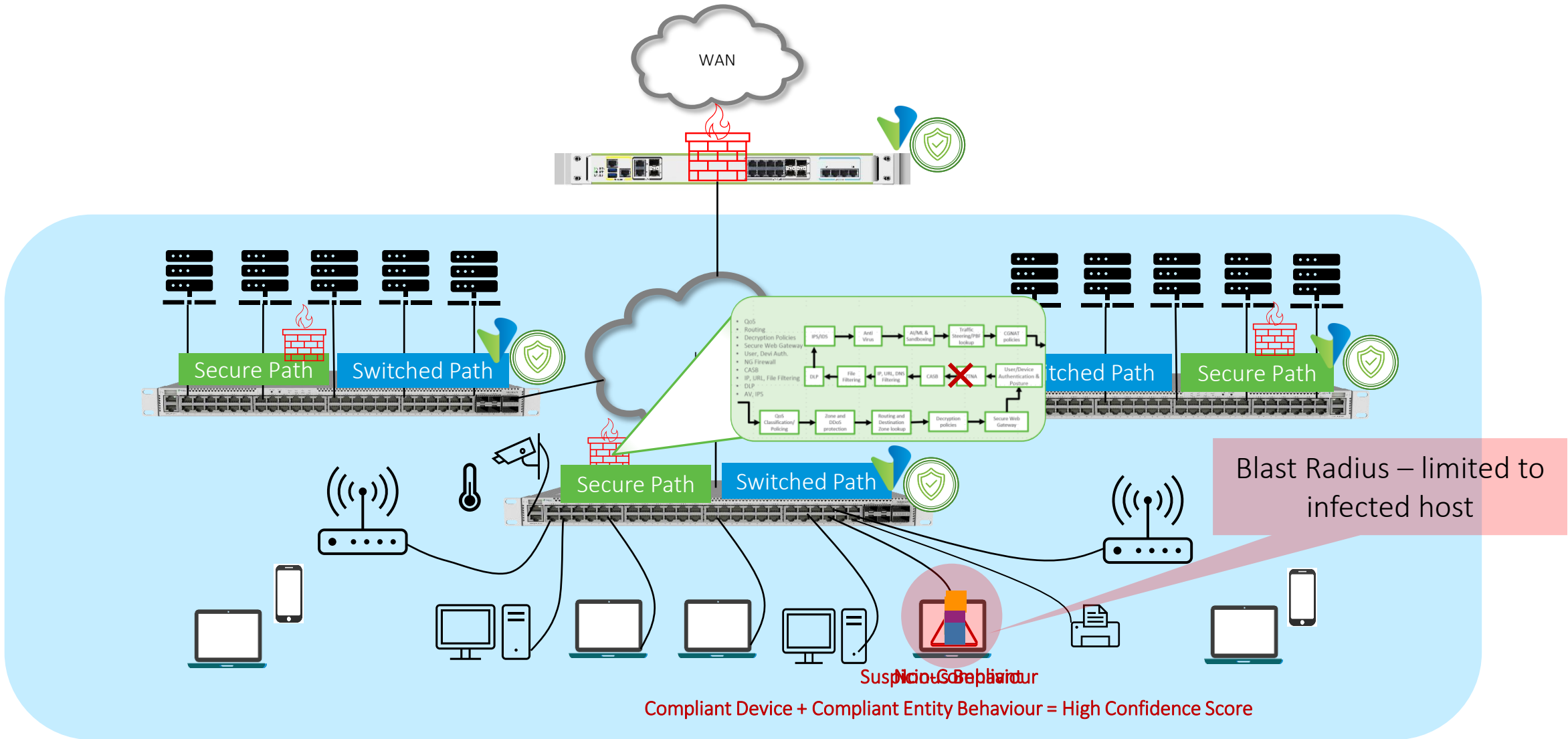


Micro-Segmentation

Legacy Campus: Infection blast radius expansive



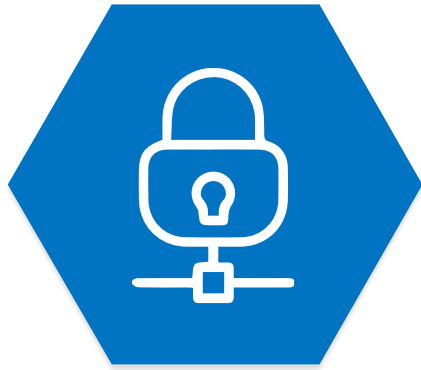
ZT-LAN: Blast radius is limited to the infected host



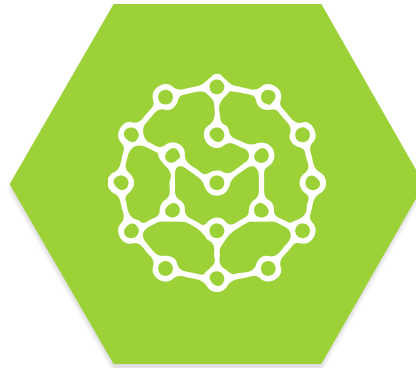
Micro-Segmentation Benefits



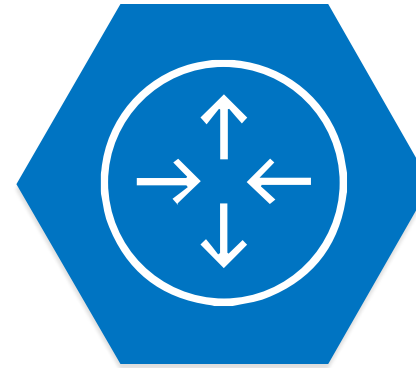
**Enhanced
Visibility**



**Zero Trust
Network**



**Attack
Surface
Reduction**

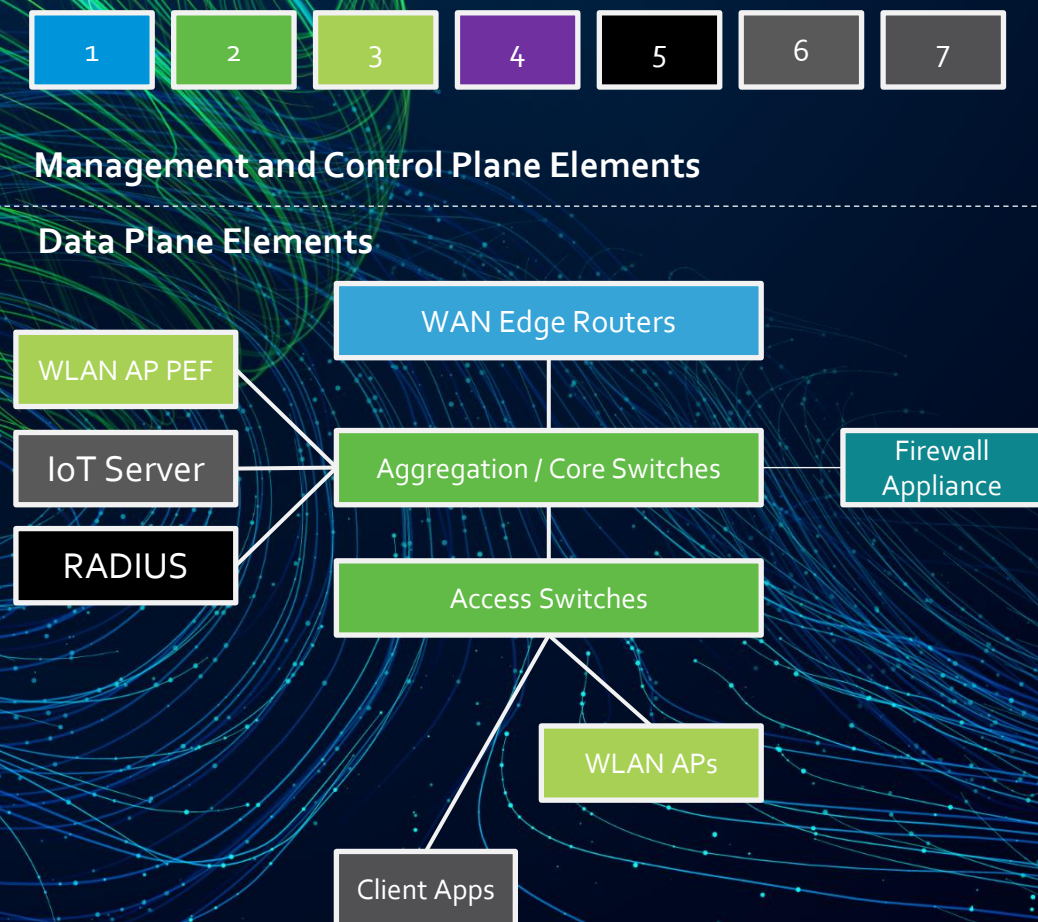


**Increased East-
West and North-
South Security**



Compliance

Today's LAN Architecture

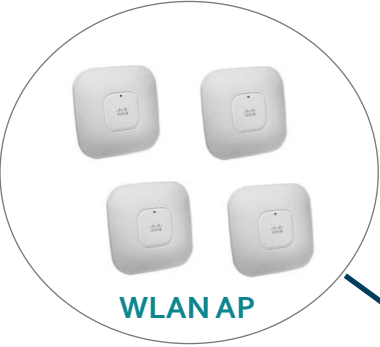


- Fragmented approach to switching, routing, security and network services
- Multiple panes of views for visibility across the LAN
- Security is an afterthought for Enterprise LAN, no ZTNA
- Hardware centric, low or no agility
- Complex
- Expensive. Spiraling costs with multiple vendors and multiple products with niche technologies

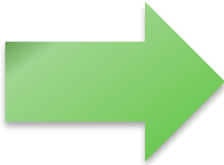
Why modernize the LAN?

	Current LAN	Modernized LAN
Product Architecture	HD-LAN	Software Defined-LAN
Deployment Approach	Manual/CLI/Scripts	Zero Touch Provisioning
Visibility & Control	L2/L3	User/Device/Application
Segmentation	VLAN based With Adjunct Firewall	Built-in Micro-segmentation
Secure Overlays	Vendor-driven proprietary technologies	VXLAN, within LAN, LAN to WAN, LAN to WAN to DC
Lifecycle Management	Complex (Manual)	Simple (Automated)

Enterprise wiring closet : Legacy to New



- 2 x Comp A Firewalls
- 1 x SDWAN
- 2 x Comp A/B Controller
- 2 x Comp C Switches



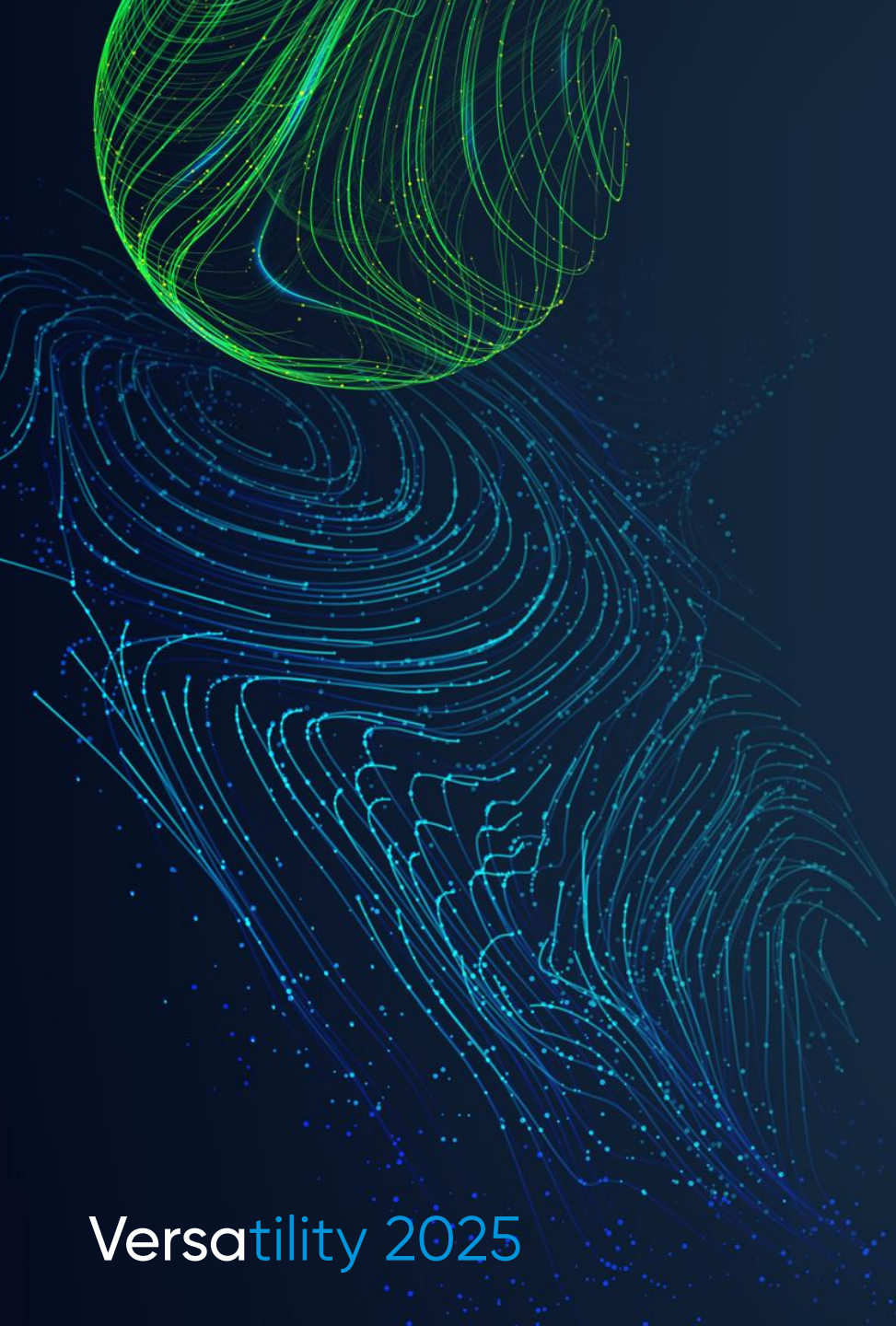
- 2 X Versa Networks
- ✓ SDWAN
 - ✓ Firewall
 - ✓ WLAN Cloud Controller
 - ✓ POE+ Switch



- ✓ Less Power
- ✓ Less Space
- ✓ Unified Management
- ✓ More efficient
- ✓ More secure
- ✓ Scalable

Versatility 2025





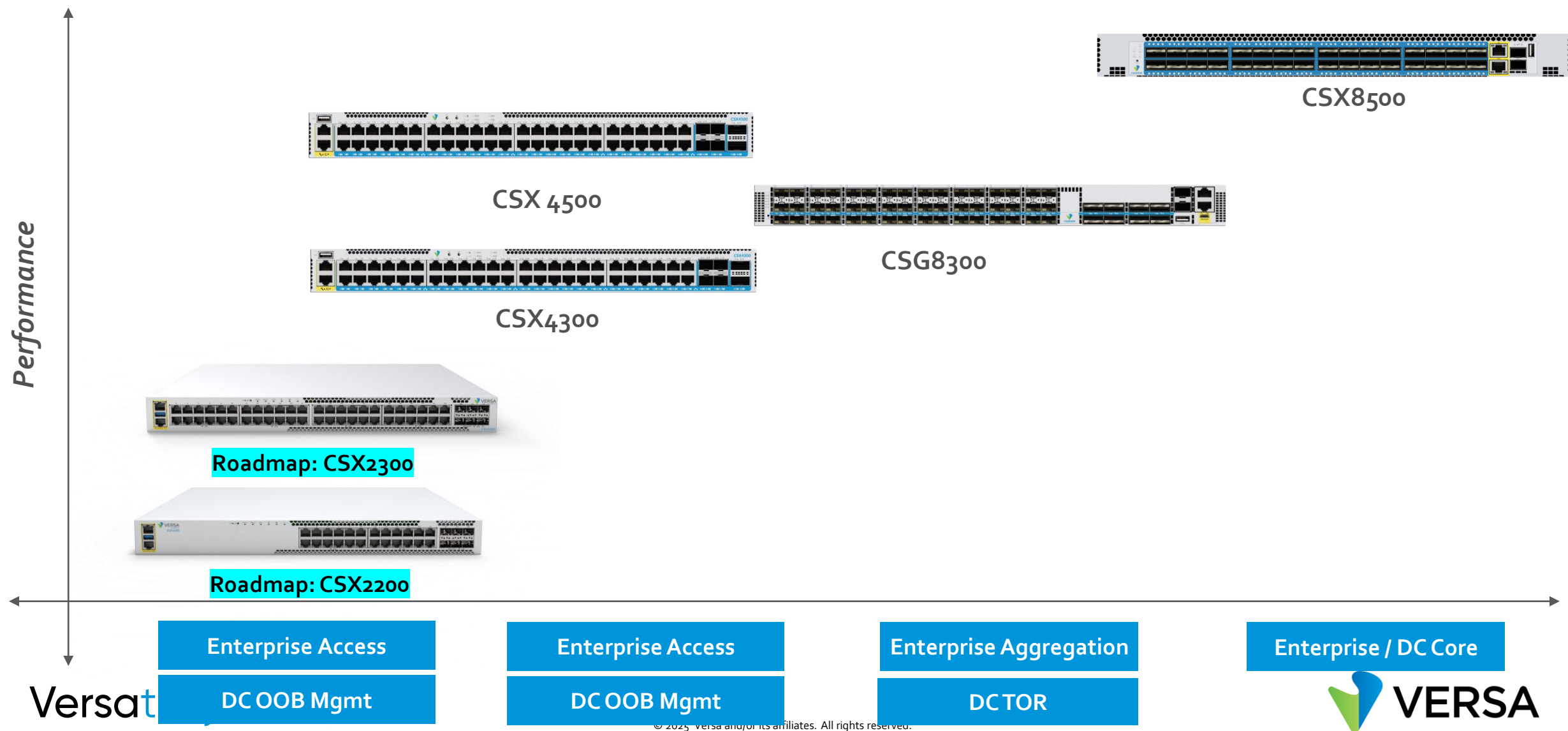
CSX Platforms

Versatility 2025

© 2025 Versa and/or its affiliates. All rights reserved.

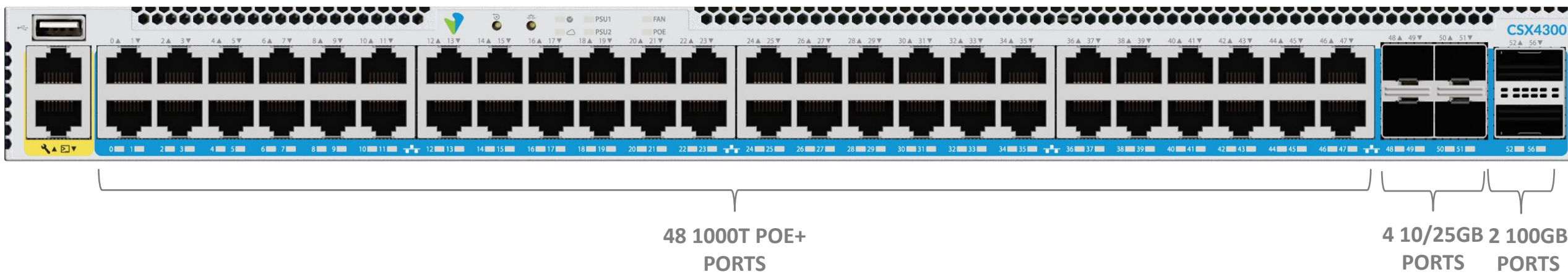


CSX: SD-LAN Switches

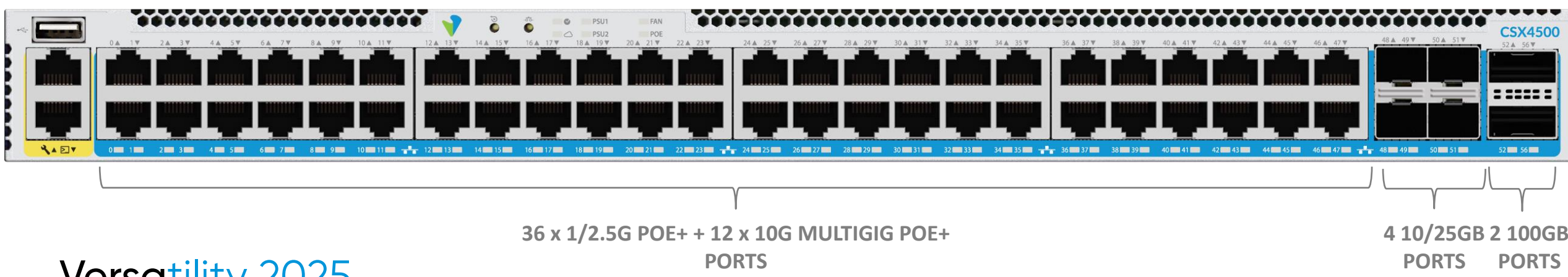


VERSA CSX 4K EDGE Access SWITCHES

CSX4300



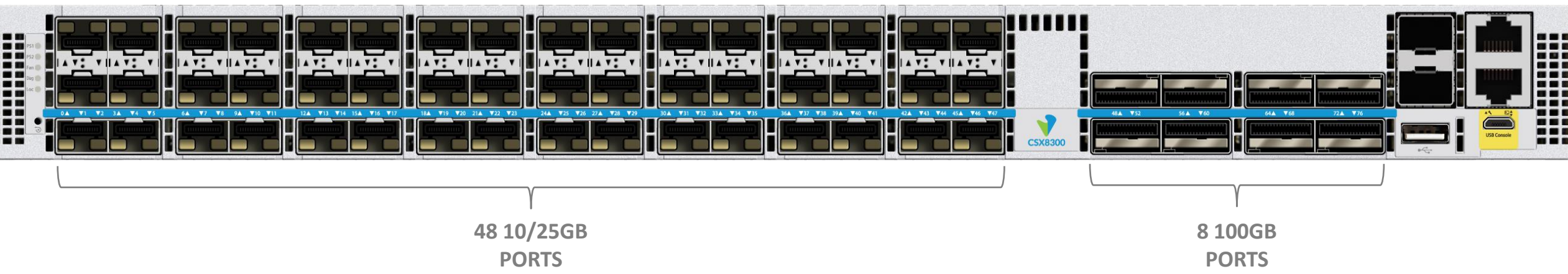
CSX4500



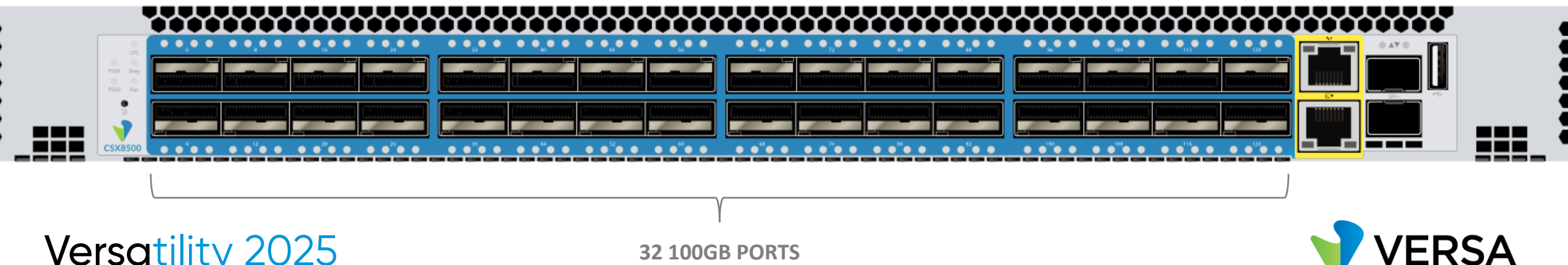
Versatility 2025

VERSA CSX8K AGGREGATION AND CORE SWITCHES

CSX8300



CSX8500



CSX2000 Series

CSX2200



24X 1GE 90W POE + 6X 10GE

CSX2300



48X 1GE 90W POE + 6X 10GE

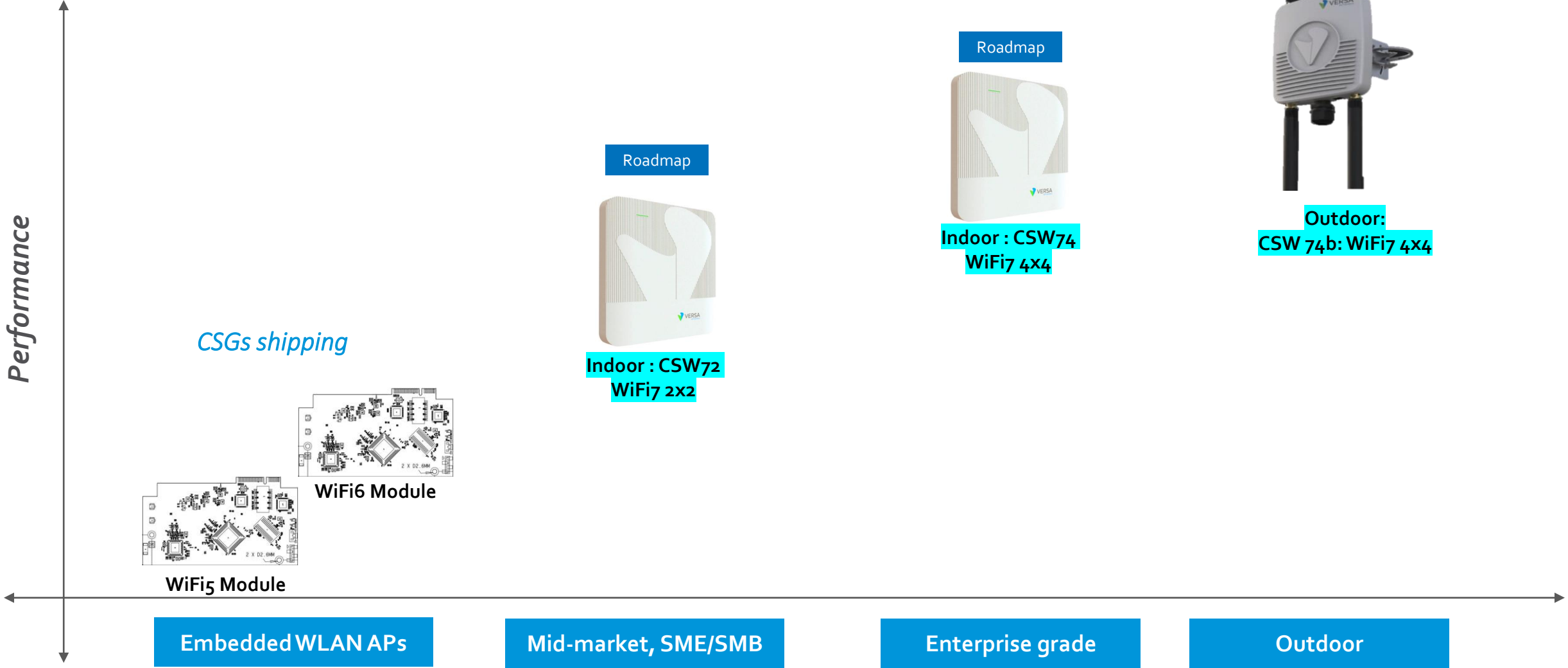
CSX2500



24X 2.5/1GE 90W POE + 24X 1GE 90W POE + 6X 25/10GE

Versatility 2025

CSW: SD-WLAN APs



Versatility 2025

CSW74: Enterprise Grade WIFI 7 Access Point



- Available Indoor and Outdoor versions
- Tri-radio WIFI 7: 2.4, 5 and 6 Ghz
- Dedicated Scanning radio for Wireless Intrusion Prevention and Spectrum analysis
- BLE/Zigbee for Location and IOT usecases
- Integrated with SD-LAN
- AI-RRM for optimal User Experience
- Alops for automated operations

Security Service Edge Products

Zero Trust Network Access (ZTNA)
Cloud Access Security Broker (CASB)
Secure Web Gateway (SWG)
Firewall as a Service (FWaaS)
Data Loss Prevention (DLP)
Remote Browser Isolation (RBI)
Identity Broker
Digital Experience Monitoring (DEM)
Advanced Threat Protection (ATP)

Unified SASE Products

Unified SASE
Private SASE
Sovereign SASE
SASE-on-SIM
Global Private Fabric
Digital Experience Monitoring (DEM)

Secure SD-WAN Products

SD-WAN
Routing
NGFW
SD-WAN for Lean IT
Appliance Hardware
Digital Experience Monitoring (DEM)

Advanced Security Products

NGFW
IoT Security
OT Security
IPS/IDS
Advanced Threat Protection (ATP)
UEBA
GenAI Firewall
AI for Security
ZTNA on-premises
Advanced security perimeter for LAN

Secure SD-LAN Products

SD-LAN
Routing
Switching
Appliance Hardware
Digital Experience Monitoring (DEM)
ZTNA on-premises
Advanced perimeter security for LAN



INTEGRATIONS

- Identity Providers
- EPP / EDR
- MDM
- Threat Intelligence

Artificial Intelligence

Zero Trust

Scalable multi-plane architecture

High availability

API

Agent / Agentless

Observability

Multi-tenancy

Real-time message bus

Traffic Engineered Fabric

Automation

Appliances (L2/L3/L4-L7)

INTEGRATIONS

- SSE / SD-WAN
- Multi-Cloud
- Security Analytics
- Network Monitoring/Mgmt
- Automation
- Service Desk

Thank you

Versatility 2025

